



INDUSTRIAL VACUUMS

PRO

Industrial single and three-phase vacuums specific to solve every needs in according to the type of material to vacuuming.
This line of industrial vacuum adopt a pneu-mechanical semi automatic filter shaker actionable by a simple movement of a lever.





	GENERAL DUST	FIN DUST	DUST AND SOLIDS	LIGHT AND VOLUMINOUS	DUST AND LIQUIDS	OIL METAL CHIPS
PRO ST	●●●●●	●●●●●	●●●●●	●●●●●	●●●●●	●●●●●
PRO ST BAG	●●●●●	●●●●●	●●●●●	●●●●●	●●●●●	●●●●●
PRO STD	●●●●●	●●●●●	●●●●●	●●●●●	●●●●●	●●●●●
PRO D 1100	●●●●●	●●●●●	●●●●●	●●●●●	●●●●●	●●●●●
PRO PTP 155	●●●●●	●●●●●	●●●●●	●●●●●	●●●●●	●●●●●
PRO ST ATEX	●●●●●	●●●●●	●●●●●	●●●●●	●●●●●	●●●●●
PRO ST BAG ATEX	●●●●●	●●●●●	●●●●●	●●●●●	●●●●●	●●●●●
PRO STD ATEX	●●●●●	●●●●●	●●●●●	●●●●●	●●●●●	●●●●●
PRO D 1100 ATEX	●●●●●	●●●●●	●●●●●	●●●●●	●●●●●	●●●●●
PRO PTP 155 ATEX	●●●●●	●●●●●	●●●●●	●●●●●	●●●●●	●●●●●
PRO S PN ATEX	●●●●●	●●●●●	●●●●●	●●●●●	●●●●●	●●●●●
PRO PN BAG ATEX	●●●●●	●●●●●	●●●●●	●●●●●	●●●●●	●●●●●
PRO SD PN ATEX	●●●●●	●●●●●	●●●●●	●●●●●	●●●●●	●●●●●
PRO D 11 PN ATEX	●●●●●	●●●●●	●●●●●	●●●●●	●●●●●	●●●●●
PRO ST WD	●●●●●	●●●●●	●●●●●	●●●●●	●●●●●	●●●●●
PRO 1100 OIL	●●●●●	●●●●●	●●●●●	●●●●●	●●●●●	●●●●●
PRO 1100 SUBOIL	●●●●●	●●●●●	●●●●●	●●●●●	●●●●●	●●●●●
PRO CAR 1155 OIL	●●●●●	●●●●●	●●●●●	●●●●●	●●●●●	●●●●●
PRO CAR 1155 SUBOIL	●●●●●	●●●●●	●●●●●	●●●●●	●●●●●	●●●●●
PRO 11 PN OIL	●●●●●	●●●●●	●●●●●	●●●●●	●●●●●	●●●●●
PRO RVS 22-3-55 /ATEX	●●●●●	●●●●●	●●●●●	●●●●●	●●●●●	●●●●●
PRO RVS 180	●●●●●	●●●●●	●●●●●	●●●●●	●●●●●	●●●●●
PRO BF	●●●●●	●●●●●	●●●●●	●●●●●	●●●●●	●●●●●

	TYPE OF APPLICATION	DEGREE OF SPECIFICITY	MOTORIZIONE	FILTER TYPE	FILTERSHAKER	COLLECTION	CERTIFICATION
PRO ST	Dust	●●●●●	Turbine	M class aluminized conductive cartridge	Pneu-mechanical Semi-Automatic	Tank 50 L	CE
PRO ST BAG	Dust	●●●●●	Turbine	M class aluminized conductive cartridge	Pneu-mechanical Semi-Automatic	LONGOPAC® 22 Mt	CE
PRO STD	Dust	●●●●●	Turbine	M class aluminized conductive cartridge	Pneu-mechanical Semi-Automatic	Tank 75 L	CE
PRO D 1100	Dust	●●●●●	Turbine	M class aluminized conductive cartridge	Pneu-mechanical Semi-Automatic	Tank 75 L	CE
PRO PTP 155	Dust and solids	●●●●●	Turbine	M class aluminized conductive cartridge	Pneu-mechanical Semi-Automatic	Tank 100 L	CE
PRO ST ATEX	Dust	●●●●●	Turbine	M class aluminized conductive cartridge	Pneu-mechanical Semi-Automatic	Tank 50 L	CE + ATEX 2-22
PRO ST BAG ATEX	Dust	●●●●●	Turbine	M class aluminized conductive cartridge	Pneu-mechanical Semi-Automatic	LONGOPAC® 22 Mt	CE + ATEX 21 / 2-22
PRO STD ATEX	Dust	●●●●●	Turbine	M class aluminized conductive cartridge	Pneu-mechanical Semi-Automatic	Tank 75 L	CE
PRO D 1100 ATEX	Dust	●●●●●	Turbine	M class aluminized conductive cartridge	Pneu-mechanical Semi-Automatic	Tank 75 L	CE + ATEX 21 / 2-22
PRO PTP 155 ATEX	Dust and solids	●●●●●	Turbine	M class aluminized conductive cartridge	Pneu-mechanical Semi-Automatic	Tank 100 L	CE
PRO S PN ATEX	Dust	●●●●●	Pneumatic Venturi	M class aluminized conductive cartridge	Pneu-mechanical Semi-Automatic	Tank 50 L	CE + ATEX 2-22
PRO PN BAG ATEX	Dust	●●●●●	Pneumatic Venturi	M class aluminized conductive cartridge	Pneu-mechanical Semi-Automatic	LONGOPAC® 22 Mt	CE + ATEX 1-21 / 2-22
PRO SD PN ATEX	Dust	●●●●●	Pneumatic Venturi	M class aluminized conductive cartridge	Pneu-mechanical Semi-Automatic	Tank 75 L	CE + ATEX 1-21 / 2-22
PRO D 11 PN ATEX	Dust	●●●●●	Pneumatic Venturi	M class aluminized conductive cartridge	Pneu-mechanical Semi-Automatic	Tank 75 L	CE + ATEX 1-21 / 2-22
PRO ST WD	Oil metal chips	●●●●●	Turbine	M class aluminized conductive cartridge	Pneu-mechanical Semi-Automatic	Tank 50 L	CE
PRO 1100 OIL	Oil metal chips	●●●●●	Turbine	M class aluminized conductive cartridge	Pneu-mechanical Semi-Automatic	Tank 100 L	CE
PRO 1100 SUBOIL	Oil metal chips	●●●●●	Turbine	M class aluminized conductive cartridge	Pneu-mechanical Semi-Automatic	Tank 100 L	CE
PRO CAR 1155 OIL	Oil metal chips	●●●●●	Turbine	M class aluminized conductive cartridge	Pneu-mechanical Semi-Automatic	Tank 100 L	CE
PRO CAR 1155 SUBOIL	Oil metal chips	●●●●●	Turbine	M class aluminized conductive cartridge	Pneu-mechanical Semi-Automatic	Tank 100 L	CE
PRO 11 PN OIL	Oil metal chips	●●●●●	Pneumatic Venturi	M class aluminized conductive cartridge	Pneu-mechanical Semi-Automatic	Tank 100 L	CE
PRO RVS 22-3-55	Light and voluminous	●●●●●	Turbine	Polyester	-	Container bag 120 L	CE
PRO RVS 22-3-55 ATEX	Light and voluminous	●●●●●	Turbine	Polyester	-	Container bag 120 L	CE + ATEX 2-22
PRO RVS 180	Light and voluminous	●●●●●	1 Tru-Flow collector motors	Polyester	-	Container bag 80 L	CE
PRO BF	Dust	●●●●●	Turbine	M class aluminized conductive cartridge	Manual	Tank single 12 L	CE



PRO

COYNCO[®]

www.coynco.com

■ TURBINE INDUSTRIAL VACUUMS FOR DUST



ST

Page 33



STD

Page 36



D 1100

Page 37



PTP 155

Page 38

■ INDUSTRIAL VACUUMS FOR OIL AND METAL CHIPS



ST WD

Page 50



11 PN OIL

Page 51



CAR 1155 OIL / SUBOIL

Page 53

■ INDUSTRIAL VACUUMS FOR LIGHT AND VOLUMINOUS MATERIAL



RVS 180

Page 59



RVS 22-3-55

Page 57

■ FIXED SUCTION UNIT



BF

Page 60

PRO

RELIABILITY, ROBUSTNESS SIMPLICITY AND EFFICIENCY IN ONE VACUUM ONLY

Models of the LINE PRO designated for dust or solid aspiration are built to meet the needs of heavy use and for this they offer extreme strength and effectiveness intrinsic to the use for which they are designed specifically. Being machines with special technical features, are very specifics, mainly for dust suction.



SEMI-AUTOMATIC FILTER CLANING WITH PNEU-MECHANICAL PISTON

The filter cleaning is entrusted to a Coynco's patented system which through the reverse flow system activate a pneu-mechanic piston that moving up & down create vibrations able to make an effective and fast cleaning. The dust deposited in the filter slip into an underlying container, thereby restoring the original filtering capacity. Cleaning action is manageable by the operator thanks to a lever placed on the vacuum's head.

■ TANGENTIAL INLET

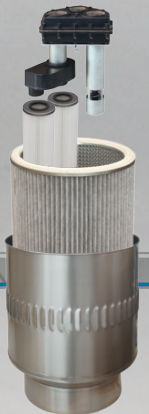
The tangential inlet allows for the entrance of materials vacuum-cleaned with the highest speed, making possible the cyclonic effect and thus increasing the separation of filter dusts thereby reducing blockage.

■ FILTRATION SYSTEM

The primary polyester cartridge filters are certified in the M class and have a layer of aluminium that makes them conductive and subsequently antistatic, which is necessary for discharge of electrostatic forces that are generated with the suction of dust, especially very fine particles.

The use of an extremely smooth surface also allows dust to slip away thanks to the vibrations created by a shaker that perfectly clean the filter guaranteeing constant high suction performance.

The filtration class can be upgraded with the utilization of two secondary filters ensuring a filtration efficiency of 99,995% of 0,3 μ vacuumed particle size



■ CYCLONE FOR INCREASED FILTERING EFFICIENCY

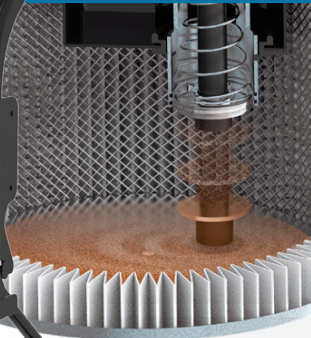
The special slits in the upper part of the filter protection ensure that the sucked air flow evenly leaving a low velocity in the base. This prevents both the dust that is moving down towards the container and that which has already been deposited from moving and being sucked onto the filter.

TANGENTIAL INLET FOR BETTER DUST SEPARATION FROM THE FILTER

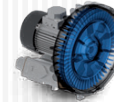
STORAGE CONTAINER



SEMI-AUTOMATIC FILTER CLEANING SYSTEM WITH A PNEU-MECHANICAL PISTON THAT MOVING UP & DOWN CREATE VIBRATIONS ABLE TO MAKE AN EFFECTIVE AND FAST CLEANING.



SIDE CHANNEL TURBINE



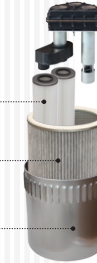
STANDARD VERSION

SURFACE 13.000 cm²

SECONDARY HEPA FILTER (OPTIONAL)

M CLASS CONDUCTIVE ALUMINIZED PRIMARY CARTRIDGE FILTER

CYCLONE FOR INCREASED FILTER EFFICIENCY



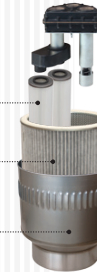
MAXI VERSION

SURFACE 18.000 cm²

SECONDARY HEPA FILTER (OPTIONAL)

M CLASS CONDUCTIVE ALUMINIZED PRIMARY CARTRIDGE FILTER

CYCLONE FOR INCREASED FILTER EFFICIENCY



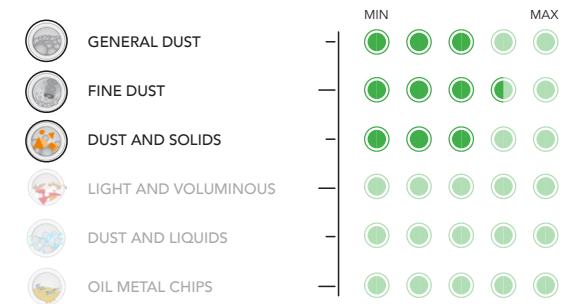
TANK QUICK RELEASE FOR FAST DISPOSAL



The ST models are some of the most popular among the turbine, as they are suitable for the most varied aspirations in all sectors for the general suction of dust and solids, therefore less suitable for more specific requests. Powered with three-phase side channel turbine, produced by us and made of die-cast aluminum. Extremely sturdy, quiet, powerful and reliable and suitable for continuous use, even 24 hours on 24.

WORK EFFICIENCY

USEFUL RATING FOR THE COMPARISON WITH OTHER MODELS FROM OUR RANGE



TYPE OF APPLICATION

DUST

DEGREE OF SPECIFICITY



TECHNICAL DATAS

	PRO	ST 22	ST 22 MAXI	ST 3	ST 3 MAXI
MOTORIZATION	TURBINE	TURBINE	TURBINE	TURBINE	TURBINE
POWER	2,2 kW	2,2 kW	3 kW	3 kW	3 kW
VOLTAGE	230 V ⚡	230 V ⚡	400 V ⚡	400 V ⚡	400 V ⚡
FREQUENCY	50 Hz	50 Hz	50-60 Hz	50-60 Hz	50-60 Hz
FILTER SHAKER	SEMI - AUTO	SEMI - AUTO	SEMI - AUTO	SEMI - AUTO	SEMI - AUTO
FILTER CLASS	13000 cm ²	18000 cm ²	13000 cm ²	18000 cm ²	18000 cm ²
STANDARD FILTRATION	M	M	M	M	M
FILTRATION OPTIONAL	M + HEPA	M + HEPA	M + HEPA	M + HEPA	M + HEPA
AIR FLOW	320 m ³ /h	320 m ³ /h	320 m ³ /h	320 m ³ /h	320 m ³ /h
MAX DEPRESSION	300 mBar	300 mBar	320 mBar	320 mBar	320 mBar
VACUUM VALVE	200 mBar	200 mBar	250 mBar	250 mBar	250 mBar
CAPACITY	50 L	50 L	50 L	50 L	50 L
DIMENSIONS	80x60 h 130 cm	80x60 h 140 cm	80x60 h 130 cm	80x60 h 140 cm	80x60 h 140 cm
WEIGHT	85 Kg	85 Kg	85 Kg	85 Kg	85 Kg

VOLTAGES AVAILABLE: 200 V - 60 HZ • 220 V - 60 HZ • 480 V - 60 HZ • 575 V - 60 HZ

PRO ST BAG

TANGENTIAL INLET FOR BETTER DUST SEPARATION FROM THE FILTER

STORAGE CONTAINER

BIGGER REAR WHEELS

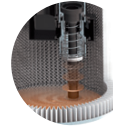
LONGOPAC® CONTINUOUS BAG COLLECTION SYSTEM 22 METERS



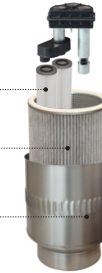
SIDE CHANNEL TURBINE



SEMI-AUTOMATIC FILTER CLEANING SYSTEM WITH A PNEU-MECHANICAL PISTON



SECONDARY HEPA FILTER (OPTIONAL)

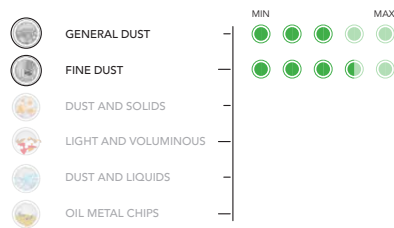


M CLASS CONDUCTIVE ALUMINIZED PRIMARY CARTRIDGE FILTER

CYCLONE FOR INCREASED FILTER EFFICIENCY

Industrial vacuum cleaners ideal for the suction of dry dust and a continuous bag collection system LONGOPAC®.

WORK EFFICIENCY



USEFUL RATINGS FOR THE COMPARISON WITH OTHER MODELS FROM OUR RANGE

TYPE OF APPLICATION

DUST

TECHNICAL DATAS

PRO	ST 22 BAG	ST 3 BAG
MOTORIZATION	TURBINE	TURBINE
POWER	2,2 kW	3 kW
VOLTAGE	230 V ⚡	400 V ⚡
FREQUENCY	50 Hz	50-60 Hz
FILTER SHAKER	SEMI - AUTO	SEMI - AUTO
FILTER CLASS	18000 cm ²	18000 cm ²
STANDARD FILTRATION	M	M
FILTRATION OPTIONAL	M + HEPA	M + HEPA
AIR FLOW	320 m ³ /h	320 m ³ /h
MAX DEPRESSION	300 mBar	320 mBar
VACUUM VALVE	200 mBar	250 mBar
HARVESTING SYSTEM	LONGOPAC®	LONGOPAC®
DIMENSIONS	80x60 h 175 cm	80x60 h 175 cm
WEIGHT	107 Kg	107 Kg

VOLTAGES AVAILABLE: 200 V - 60 HZ • 220 V - 60 HZ • 480 V - 60 HZ • 575 V - 60 HZ

PRO STD

TANGENTIAL INLET FOR BETTER DUST SEPARATION FROM THE FILTER

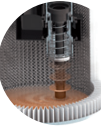
STORAGE CONTAINER



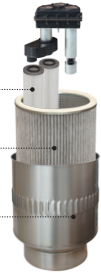
SIDE CHANNEL TURBINE



SEMI-AUTOMATIC FILTER CLEANING SYSTEM WITH A PNEU-MECHANICAL PISTON



SECONDARY HEPA FILTER (OPTIONAL)



M CLASS CONDUCTIVE ALUMINIZED PRIMARY CARTRIDGE FILTER

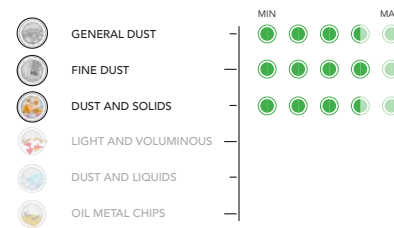
CYCLONE FOR INCREASED FILTER EFFICIENCY

TANK QUICK RELEASE FOR FAST DISPOSAL



The filter characteristics of the STD models integrated with our cleaning system of semi-automatic filter create ideal industrial vacuum cleaners for all applications where there are large amounts of dust to be removed in any industrial environment or production process, reducing the time dedicated to cleaning and taking advantage of environments totally dedusted.

WORK EFFICIENCY



USEFUL RATINGS FOR THE COMPARISON WITH OTHER MODELS FROM OUR RANGE

TYPE OF APPLICATION

DUST

TECHNICAL DATAS

PRO	STD 220	STD 300
MOTORIZATION	TURBINE	TURBINE
POWER	2,2 kW	3 kW
VOLTAGE	230 V ⚡	400 V ⚡
FREQUENCY	50 Hz	50-60 Hz
FILTER SHAKER	SEMI - AUTO	SEMI - AUTO
FILTER CLASS	22000 cm ²	22000 cm ²
STANDARD FILTRATION	M	M
FILTRATION OPTIONAL	M + HEPA	M + HEPA
AIR FLOW	320 m ³ /h	320 m ³ /h
MAX DEPRESSION	300 mBar	320 mBar
VACUUM VALVE	200 mBar	250 mBar
CAPACITY	75 L	75 L
DIMENSIONS	80x60 h 165 cm	80x60 h 165 cm
WEIGHT	90 Kg	90 Kg

VOLTAGES AVAILABLE: 200 V - 60 HZ • 220 V - 60 HZ • 480 V - 60 HZ • 575 V - 60 HZ

DEGREE OF SPECIFICITY



DEGREE OF SPECIFICITY



PRO D 1100

EXTREMELY STURDY TELESCOPIC CONTAINER LIFTING SYSTEM

REINFORCED FRAME

STORAGE CONTAINER

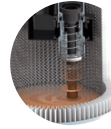
TANGENTIAL INLET FOR BETTER DUST SEPARATION FROM THE FILTER



SINGLE-STAGE OR TWO-STAGE SIDE CHANNEL TURBINE



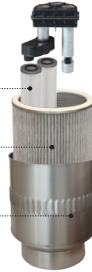
SEMI-AUTOMATIC FILTER CLEANING SYSTEM WITH A PNEU-MECHANICAL PISTON



SECONDARY HEPA FILTER (OPTIONAL)

M CLASS CONDUCTIVE ALUMINIZED PRIMARY CARTRIDGE FILTER

CYCLONE FOR INCREASED FILTER EFFICIENCY



PRO PTP 155 / PTS 155

TANGENTIAL INLET FOR BETTER DUST SEPARATION FROM THE FILTER

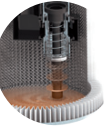
TANK QUICK RELEASE FOR FAST DISPOSAL



TWO-STAGE SIDE CHANNEL TURBINE



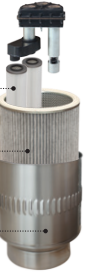
SEMI-AUTOMATIC FILTER CLEANING SYSTEM WITH A PNEU-MECHANICAL PISTON



SECONDARY HEPA FILTER (OPTIONAL)

M CLASS CONDUCTIVE ALUMINIZED PRIMARY CARTRIDGE FILTER

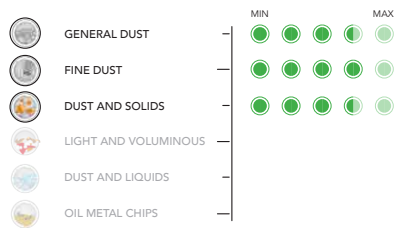
CYCLONE FOR INCREASED FILTER EFFICIENCY



The models of the D 1100 series are heavy-duty industrial vacuum cleaners suitable for cleaning dust or solid ideal in the industry as characterized by a building designed to meet the needs of solidity and strength. The lifting system is designed to vacuum and filling the containers with heavy material in order to ensure a good reliability in time.

Powered industrial vacuum cleaner with three-phase side channel of 5.5 kW turbine in series, high depression ideal for the suction of heavy materials, high specific weight, or long distances as it is able to reach a maximum vacuum of 500 mBar. They are characterized by a construction designed to meet the requirements of sturdiness and solidity. The lifting system is designed to vacuum and filling the containers with heavy material in order to ensure a good reliability in time.

WORK EFFICIENCY



USEFUL RATING FOR THE COMPARISON WITH OTHER MODELS FROM OUR RANGE

TYPE OF APPLICATION

DUST

DEGREE OF SPECIFICITY

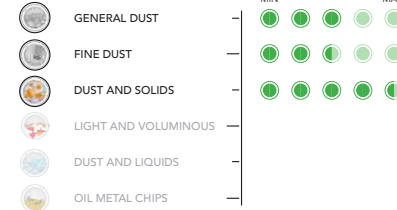


TECHNICAL DATAS

PRO	D 1122	D 1130	D 1155
MOTORIZATION	TURBINE	TURBINE	TURBINE
POWER	2,2 kW	3 kW	5,5 kW
VOLTAGE	230 V ⚡	400 V ⚡	400 V ⚡
FREQUENCY	50 Hz	50-60 Hz	50 Hz
FILTER SHAKER	SEMI - AUTO	SEMI - AUTO	SEMI - AUTO
FILTER CLASS	22000 cm ²	22000 cm ²	22000 cm ²
STANDARD FILTRATION	M	M	M
FILTRATION OPTIONAL	M + HEPA	M + HEPA	M + HEPA
AIR FLOW	320 m ³ /h	320 m ³ /h	520 m ³ /h
MAX DEPRESSION	300 mBar	320 mBar	320 mBar
VACUUM VALVE	200 mBar	250 mBar	250 mBar
CAPACITY	75 L	75 L	75 L
DIMENSIONS	80x63 h 165 cm	80x63 h 165 cm	80x63 h 180 cm
WEIGHT	126 Kg	126 Kg	151 Kg

VOLTAGES AVAILABLE: 200 V - 60 HZ • 220 V - 60 HZ • 480 V - 60 HZ • 575 V - 60 HZ

WORK EFFICIENCY



USEFUL RATING FOR THE COMPARISON WITH OTHER MODELS FROM OUR RANGE

TYPE OF APPLICATION

DUST - SOLIDS

DEGREE OF SPECIFICITY



TECHNICAL DATAS

PRO	PTP	PTS
MOTORIZATION	TURBINE	TURBINE
POWER	5,5 kW	5,5 kW
VOLTAGE	400 V ⚡	400 V ⚡
FREQUENCY	50 Hz	50 Hz
FILTER SHAKER	SEMI AUTO	SEMI AUTO
FILTER CLASS	22000 cm ²	22000 cm ²
STANDARD FILTRATION	M	M
FILTRATION OPTIONAL	M + HEPA	M + HEPA
AIR FLOW	320 m ³ /h	520 m ³ /h
MAX DEPRESSION	530 mBar	320 mBar
VACUUM VALVE	450 mBar	250 mBar
CAPACITY	100 L	100 L
DIMENSIONS	112x60 h 135 cm	112x60 h 135 cm
WEIGHT	151 Kg	151 Kg

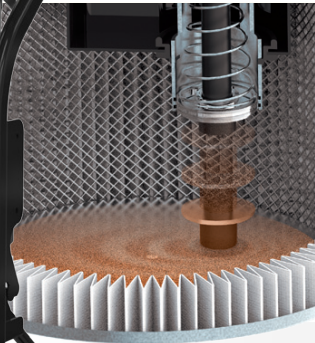
VOLTAGES AVAILABLE: 200 V - 60 HZ • 220 V - 60 HZ • 480 V - 60 HZ • 575 V - 60 HZ

TANGENTIAL INLET FOR BETTER DUST SEPARATION FROM THE FILTER

STORAGE CONTAINER



SEMI-AUTOMATIC FILTER CLEANING SYSTEM WITH A PNEU-MECHANICAL PISTON THAT MOVING UP & DOWN CREATE VIBRATIONS ABLE TO MAKE AN EFFECTIVE AND FAST CLEANING.



At^{EX} SIDE CHANNEL TURBINE



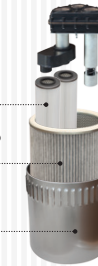
STANDARD VERSION

SURFACE 13.000 cm²

SECONDARY HEPA FILTER (OPTIONAL)

M CLASS CONDUCTIVE ALUMINIZED PRIMARY CARTRIDGE FILTER

CYCLONE FOR INCREASED FILTER EFFICIENCY



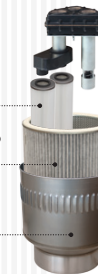
MAXI VERSION

SURFACE 18.000 cm²

SECONDARY HEPA FILTER (OPTIONAL)

M CLASS CONDUCTIVE ALUMINIZED PRIMARY CARTRIDGE FILTER

CYCLONE FOR INCREASED FILTER EFFICIENCY



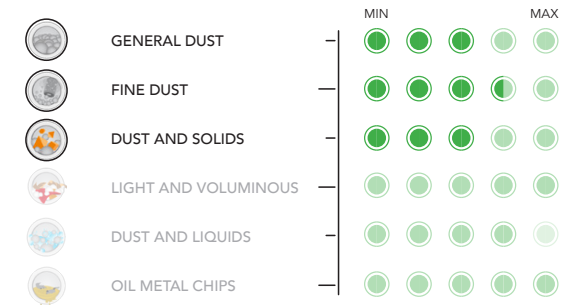
TANK QUICK RELEASE FOR FAST DISPOSAL



The ST ATEX models are some of the most popular among the turbine, as they are suitable for the most varied aspirations in all sectors for the general vacuuming of dust and solids, therefore less suitable for more specific requests. Powered with three-phase side channel turbine, produced by us and made of die-cast aluminum. Extremely sturdy, quiet, powerful and reliable and suitable for continuous use, even 24 hours on 24.

WORK EFFICIENCY

USEFUL RATING FOR THE COMPARISON WITH OTHER MODELS FROM OUR RANGE



TYPE OF APPLICATION

DUST

DEGREE OF SPECIFICITY



TECHNICAL DATAS

PRO	ST 22 At ^{EX} 2-22	ST 3 At ^{EX} 2-22	ST 22 MAXI At ^{EX} 2-22	ST 3 MAXI At ^{EX} 2-22	ST 4 MAXI At ^{EX} 21
MOTORIZATION	TURBINE	TURBINE	TURBINE	TURBINE	TURBINE
POWER	2 kW	2,6 kW	2 kW	2,6 kW	3,4 kW
VOLTAGE	230 V	400 V	230 V	400 V	400 V
FREQUENCY	50 Hz	50 Hz	50 Hz	50 Hz	50 Hz
FILTER SHAKER	SEMI - AUTO	SEMI - AUTO	SEMI - AUTO	SEMI - AUTO	SEMI - AUTO
FILTER CLASS	13000 cm ²	13000 cm ²	18000 cm ²	18000 cm ²	18000 cm ²
STANDARD FILTRATION	M	M	M	M	M
FILTRATION OPTIONAL	M + HEPA	M + HEPA	M + HEPA	M + HEPA	M + HEPA
AIR FLOW	320 m ³ /h	320 m ³ /h	320 m ³ /h	320 m ³ /h	320 m ³ /h
MAX DEPRESSION	300 mBar	300 mBar	300 mBar	300 mBar	300 mBar
VACUUM VALVE	200 mBar	200 mBar	200 mBar	200 mBar	200 mBar
CAPACITY	50 L	50 L	50 L	50 L	50 L
DIMENSIONS	80x60 h 130	80x60 h 130	80x60 h 140	80x60 h 140	80x60 h 140
WEIGHT	85 Kg	85 Kg	85 Kg	85 Kg	85 Kg

PRO ST BAG AtEx 2-22 AtEx 21

TANGENTIAL INLET FOR BETTER DUST SEPARATION FROM THE FILTER

STORAGE CONTAINER

BIGGER REAR WHEELS

CONTAINER, FILTER CHAMBER AND TOP COVER MADE IN AISI 304 STAINLESS STEEL IN ACCORDANCE TO ATEX STANDARD

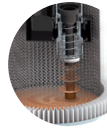
LONGOPAC® CONTINUOUS BAG COLLECTION SYSTEM 22 METERS



AtEx SIDE CHANNEL TURBINE



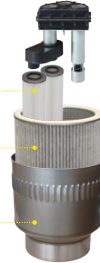
SEMI-AUTOMATIC FILTER CLEANING SYSTEM WITH A PNEU-MECHANICAL PISTON



SECONDARY HEPA FILTER (OPTIONAL)

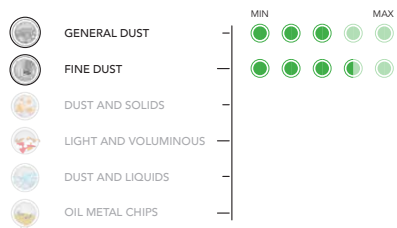
M CLASS CONDUCTIVE ALUMINIZED PRIMARY CARTRIDGE FILTER

CYCLONE FOR INCREASED FILTER EFFICIENCY



Industrial vacuum cleaners ideal for the suction of dry dust and a continuous bag collection system LONGOPAC®.

WORK EFFICIENCY



USEFUL RATINGS FOR THE COMPARISON WITH OTHER MODELS FROM OUR RANGE

TYPE OF APPLICATION

DUST

DEGREE OF SPECIFICITY



TECHNICAL DATAS

PRO	ST 22 BAG AtEx 2-22	ST 3 BAG AtEx 2-22	ST 4 BAG AtEx 21
MOTORIZATION	TURBINE	TURBINE	TURBINE
POWER	2 kW	2,6 kW	3,4 kW
VOLTAGE	230 V	400 V	400 V
FREQUENCY	50 Hz	50-60 Hz	50-60 Hz
FILTER SHAKER	SEMI - AUTO	SEMI - AUTO	SEMI - AUTO
FILTER CLASS	18000 cm ²	18000 cm ²	18000 cm ²
STANDARD FILTRATION	M	M	M
FILTRATION OPTIONAL	M + HEPA	M + HEPA	M + HEPA
AIR FLOW	320 m ³ /h	320 m ³ /h	320 m ³ /h
MAX DEPRESSION	300 mBar	320 mBar	320 mBar
VACUUM VALVE	200 mBar	220 mBar	220 mBar
HARVESTING SYSTEM	LONGOPAC®	LONGOPAC®	LONGOPAC®
DIMENSIONS	80x60 h 175	80x60 h 175	80x60 h 175
WEIGHT	107 Kg	107 Kg	107 Kg

PRO STD AtEx 2-22 AtEx 21

TANGENTIAL INLET FOR BETTER DUST SEPARATION FROM THE FILTER

CONTAINER, FILTER CHAMBER AND TOP COVER MADE IN AISI 304 STAINLESS STEEL IN ACCORDANCE TO ATEX STANDARD

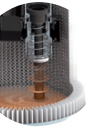
STORAGE CONTAINER



AtEx SIDE CHANNEL TURBINE



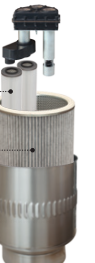
SEMI-AUTOMATIC FILTER CLEANING SYSTEM WITH A PNEU-MECHANICAL PISTON



SECONDARY HEPA FILTER (OPTIONAL)

M CLASS CONDUCTIVE ALUMINIZED PRIMARY CARTRIDGE FILTER

CYCLONE FOR INCREASED FILTER EFFICIENCY

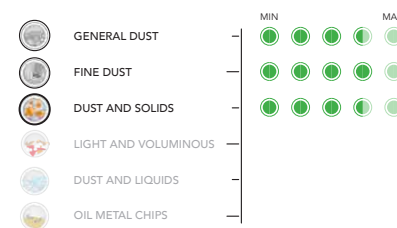


TANK QUICK RELEASE FOR FAST DISPOSAL



The filter characteristics of the STD ATEX models integrated with our cleaning system of semi-automatic filter create ideal industrial vacuum cleaners for all applications where there are large amounts of dust to be removed in any industrial environment or production process, reducing the time dedicated to cleaning and taking advantage of environments totally dedusted.

WORK EFFICIENCY



USEFUL RATINGS FOR THE COMPARISON WITH OTHER MODELS FROM OUR RANGE

TYPE OF APPLICATION

DUST

DEGREE OF SPECIFICITY



TECHNICAL DATAS

PRO	STD 220 AtEx 2-22	STD 300 AtEx 2-22	STD 400 AtEx 21
MOTORIZATION	TURBINE	TURBINE	TURBINE
POWER	2 kW	2,6 kW	3,4 kW
VOLTAGE	230 V	400 V	400 V
FREQUENCY	50 Hz	50-60 Hz	50-60 Hz
FILTER SHAKER	SEMI - AUTO	SEMI - AUTO	SEMI - AUTO
FILTER CLASS	22000 cm ²	22000 cm ²	22000 cm ²
STANDARD FILTRATION	M	M	M
FILTRATION OPTIONAL	M + HEPA	M + HEPA	M + HEPA
AIR FLOW	320 m ³ /h	320 m ³ /h	320 m ³ /h
MAX DEPRESSION	300 mBar	320 mBar	320 mBar
VACUUM VALVE	200 mBar	220 mBar	220 mBar
CAPACITY	75 L	75 L	50 L
DIMENSIONS	80x60 h 165	80x60 h 165	80x60 h 165
WEIGHT	90 Kg	90 Kg	90 Kg

PRO D 1100 AtEx 2-22 AtEx 21

EXTREMELY STURDY TELESCOPIC CONTAINER LIFTING SYSTEM

REINFORCED FRAME

STORAGE CONTAINER

TANGENTIAL INLET FOR BETTER DUST SEPARATION FROM THE FILTER

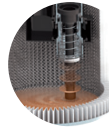
CONTAINER, FILTER CHAMBER AND TOP COVER MADE IN AISI 304 STAINLESS STEEL IN ACCORDANCE TO ATEX STANDARD



SINGLE-STAGE OR TWO-STAGE ATEX SIDE CHANNEL TURBINE

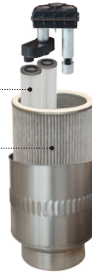


SEMI-AUTOMATIC FILTER CLEANING SYSTEM WITH A PNEU-MECHANICAL PISTON



SECONDARY HEPA FILTER (OPTIONAL)

M CLASS CONDUCTIVE ALUMINIZED PRIMARY CARTRIDGE FILTER



CYCLONE FOR INCREASED FILTER EFFICIENCY

PRO PTP 155 / PTS 155 AtEx 2-22

TANGENTIAL INLET FOR BETTER DUST SEPARATION FROM THE FILTER

CONTAINER, FILTER CHAMBER AND TOP COVER MADE IN AISI 304 STAINLESS STEEL IN ACCORDANCE TO ATEX STANDARD

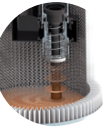
TANK QUICK RELEASE FOR FAST DISPOSAL



TWO-STAGE ATEX SIDE CHANNEL TURBINE

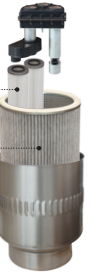


SEMI-AUTOMATIC FILTER CLEANING SYSTEM WITH A PNEU-MECHANICAL PISTON



SECONDARY HEPA FILTER (OPTIONAL)

M CLASS CONDUCTIVE ALUMINIZED PRIMARY CARTRIDGE FILTER

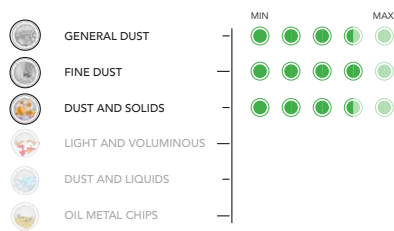


CYCLONE FOR INCREASED FILTER EFFICIENCY

The models of the D1100 ATEX series are heavy-duty industrial vacuum cleaners suitable for cleaning dust or solid ideal in the industry as characterized by a building designed to meet the needs of solidity and strength. The lifting system is designed to vacuum and filling the containers with heavy material in order to ensure a good reliability in time.

Industrial vacuum cleaner powered with three-phase side channel of 5.5 kW turbine available in series with high depression ideal for the suction of heavy materials, high specific weight, or long distances as it is able to reach a maximum vacuum of 500 mBar or in parallel for a greater air flow. These models are built with a robust design ideal for requests of companies in heavy duty industry sector.

WORK EFFICIENCY



USEFUL RATINGS FOR THE COMPARISON WITH OTHER MODELS FROM OUR RANGE

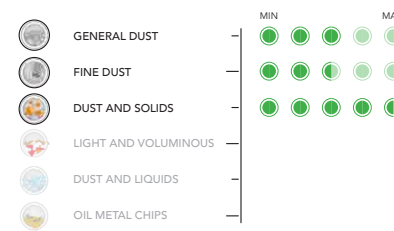
TYPE OF APPLICATION: DUST

DEGREE OF SPECIFICITY: 5 green circles

TECHNICAL DATAS

PRO	D 1122 AtEx 2-22	D 1130 AtEx 2-22	D 1155 AtEx 2-22	D 1140 AtEx 21
MOTORIZATION	TURBINE	TURBINE	TURBINE	TURBINE
POWER	2 kW	2,6 kW	5,2 kW	3,4 kW
VOLTAGE	230 V	400 V	400 V	400 V
FREQUENCY	50 Hz	50-60 Hz	50 Hz	50-60 Hz
FILTER SHAKER	SEMI - AUTO	SEMI - AUTO	SEMI - AUTO	SEMI - AUTO
FILTER CLASS	22000 cm ²	22000 cm ²	22000 cm ²	22000 cm ²
STANDARD FILTRATION	M	M	M	M
FILTRATION OPTIONAL	M + HEPA	M + HEPA	M + HEPA	M + HEPA
AIR FLOW	320 m ³ /h	320 m ³ /h	520 m ³ /h	320 m ³ /h
MAX DEPRESSION	300 mBar	320 mBar	320 mBar	320 mBar
VACUUM VALVE	200 mBar	220 mBar	240 mBar	220 mBar
CAPACITY	75 L	75 L	75 L	75 L
DIMENSIONS	80x63 h 165	80x63 h 165	80x63 h 180	80x63 h 165
WEIGHT	126 Kg	126 Kg	151 Kg	126 Kg

WORK EFFICIENCY



USEFUL RATINGS FOR THE COMPARISON WITH OTHER MODELS FROM OUR RANGE

TYPE OF APPLICATION: DUST - SOLIDS

DEGREE OF SPECIFICITY: 5 green circles

TECHNICAL DATAS

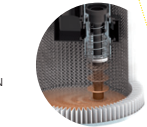
PRO	PTP AtEx 2-22	PTS AtEx 2-22
MOTORIZATION	TURBINE	TURBINE
POWER	5,5 kW	5,5 kW
VOLTAGE	400 V	400 V
FREQUENCY	50 Hz	50 Hz
FILTER SHAKER	SEMI AUTO	SEMI AUTO
FILTER CLASS	22000 cm ²	22000 cm ²
STANDARD FILTRATION	M	M
FILTRATION OPTIONAL	M + HEPA	M + HEPA
AIR FLOW	320 m ³ /h	520 m ³ /h
MAX DEPRESSION	530 mBar	320 mBar
VACUUM VALVE	450 mBar	250 mBar
CAPACITY	100 L	100 L
DIMENSIONS	112x60 h 135 cm	112x60 h 135 cm
WEIGHT	151 Kg	151 Kg

TANGENTIAL INLET FOR BETTER DUST SEPARATION FROM THE FILTER

CONTAINER, FILTER CHAMBER AND TOP COVER MADE IN AISI 304 STAINLESS STEEL IN ACCORDANCE TO ATEX STANDARD

STORAGE CONTAINER

SEMI-AUTOMATIC FILTER CLEANING SYSTEM WITH A PNEU-MECHANICAL PISTON

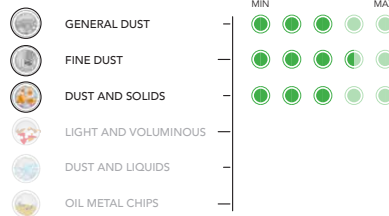


TANK QUICK RELEASE FOR FAST DISPOSAL



Pneumatic industrial vacuum cleaner ideal for general aspirations in all areas of application. Its maneuverability and compact dimensions make the move easy even in the most difficult places to reach.

WORK EFFICIENCY



USEFUL RATINGS FOR THE COMPARISON WITH OTHER MODELS FROM OUR RANGE

TYPE OF APPLICATION



DEGREE OF SPECIFICITY ● ● ● ● ● ●

TECHNICAL DATAS

	S PN AtEx 2-22	S PN MAXI AtEx 1-21	PRO	SP N MAXI AtEx 1-21
SUCTION UNIT	VENTURI	VENTURI	PRO	VENTURI
SUPPLY PRESSURE	4 - 6 Bar	4 - 6 Bar	PRO	4 - 6 Bar
AIR CONSUMPTION	1500 l/min	1500 l/min	PRO	1500 l/min
FILTER SHAKER	SEMI - AUTO	SEMI - AUTO	PRO	SEMI - AUTO
FILTER CLASS	13000 Cm ²	18000 Cm ²	PRO	18000 Cm ²
STANDARD FILTRATION	M	M	PRO	M
FILTRATION OPTIONAL	M + HEPA	M + HEPA	PRO	M + HEPA
AIR FLOW	380 m ³ /h	380 m ³ /h	PRO	380 m ³ /h
MAX DEPRESSION	280 mBar	280 mBar	PRO	280 mBar
VACUUM VALVE	380 mBar	380 mBar	PRO	380 mBar
CAPACITY	50 L	50 L	PRO	50 L
DIMENSIONS	80X60 h 115 cm	80X60 h 125 cm	PRO	80X60 h 125 cm
WEIGHT	64 Kg	64 Kg	PRO	64 Kg

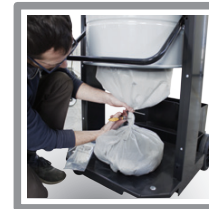
TANGENTIAL INLET FOR BETTER DUST SEPARATION FROM THE FILTER

STORAGE CONTAINER

BIGGER REAR WHEELS

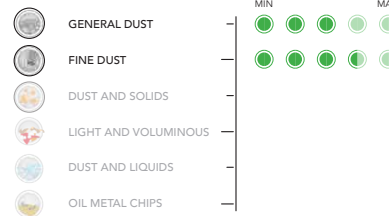
CONTAINER, FILTER CHAMBER AND TOP COVER MADE IN AISI 304 STAINLESS STEEL IN ACCORDANCE TO ATEX STANDARD

LONGOPAC® CONTINUOUS BAG COLLECTION SYSTEM 22 METERS



Pneumatic industrial vacuum cleaner suitable for the suction of dust collection system equipped with LONGOPAC®. The disposal of the aspirated material is facilitated by the use of collection bags, that, once sealed, does not allow the dispersing of contaminating particles in the environment, representing a further safety for the operator's health.

WORK EFFICIENCY



USEFUL RATINGS FOR THE COMPARISON WITH OTHER MODELS FROM OUR RANGE

TYPE OF APPLICATION



DEGREE OF SPECIFICITY ● ● ● ● ● ●

TECHNICAL DATAS

	PN BAG AtEx 2-22	PRO	PN BAG AtEx 1-21
SUCTION UNIT	VENTURI	PRO	VENTURI
SUPPLY PRESSURE	4 - 6 Bar	PRO	4 - 6 Bar
AIR CONSUMPTION	1500 l/min	PRO	1500 l/min
FILTER SHAKER	SEMI - AUTO	PRO	SEMI - AUTO
FILTER CLASS	18000 Cm ²	PRO	18000 Cm ²
STANDARD FILTRATION	M	PRO	M
FILTRATION OPTIONAL	M + HEPA	PRO	M + HEPA
AIR FLOW	380 m ³ /h	PRO	380 m ³ /h
MAX DEPRESSION	280 mBar	PRO	280 mBar
VACUUM VALVE	380 mBar	PRO	380 mBar
HARVESTING SYSTEM	LONGOPAC®	PRO	LONGOPAC®
DIMENSIONS	80X60 h 155 cm	PRO	80X60 h 155 cm
WEIGHT	87 Kg	PRO	64 Kg

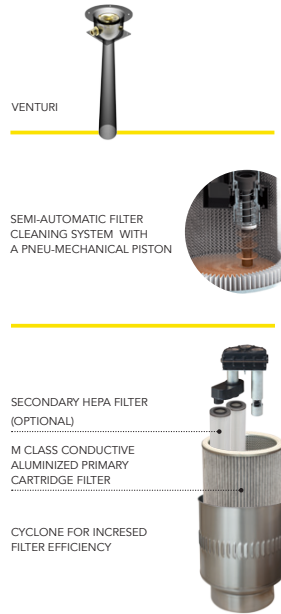
PRO SD PN Atex 2-22 Atex 1-21

TANGENTIAL INLET FOR BETTER DUST SEPARATION FROM THE FILTER

CONTAINER, FILTER CHAMBER AND TOP COVER MADE IN AISI 304 STAINLESS STEEL IN ACCORDANCE TO ATEX STANDARD

STORAGE CONTAINER

TANK QUICK RELEASE FOR FAST DISPOSAL



PRO D 11 PN Atex 2-22 Atex 1-21

EXTREMELY STURDY TELESCOPIC CONTAINER LIFTING SYSTEM

REINFORCED FRAME

STORAGE CONTAINER

TANGENTIAL INLET FOR BETTER DUST SEPARATION FROM THE FILTER

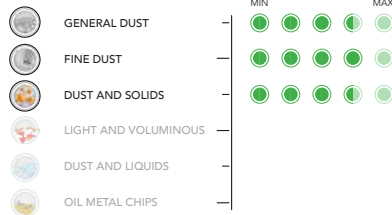
CONTAINER, FILTER CHAMBER AND TOP COVER MADE IN AISI 304 STAINLESS STEEL IN ACCORDANCE TO ATEX STANDARD



Industrial vacuums powered by compressed air from the upper filter characteristics ideal for all applications where there are large amounts of dust to be removed in any industrial environment or production process, reducing the time devoted to cleaning and taking advantage of environments totally dedusted.

Industrial vacuums powered by compressed air suitable for cleaning dust or solid in the industry as characterized by a building designed to meet the needs of solidity and strength. The lifting system is designed to vacuum and filling the containers with heavy material in order to ensure a good reliability in time.

WORK EFFICIENCY



USEFUL RATINGS FOR THE COMPARISON WITH OTHER MODELS FROM OUR RANGE

TYPE OF APPLICATION

DUST

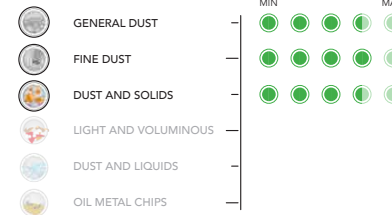
DEGREE OF SPECIFICITY



TECHNICAL DATAS

	SD PN <small>Atex 2-22</small>	SD PN <small>Atex 1-21</small>
PRO		
SUCTION UNIT	VENTURI	UNITÀ DI ASPIRAZIONE VENTURI
SUPPLY PRESSURE	4 - 6 Bar	PRESSIONE DI ALIMENTAZIONE 4 - 6 Bar
AIR CONSUMPTION	1500 l/min	CONSUMO DI ARIA 1500 l/min
FILTER SHAKER	SEMI - AUTO	SCUOTIFILTRO SEMI - AUTO
FILTER CLASS	22000 Cm ²	SUPERFICIE FILTRANTE 22000 Cm ²
STANDARD FILTRATION	M	FILTRAZIONE STANDARD M
FILTRATION OPTIONAL	M + HEPA	FILTRAZIONE OPZIONALE M + HEPA
AIR FLOW	380 m ³ /h	PORTATA D'ARIA 380 m ³ /h
MAX DEPRESSION	280 mBar	DEPRESSIONE MAX 280 mBar
VACUUM VALVE	380 mBar	DEPRESSIONE VALVOLA 380 mBar
CAPACITY	75 L	CAPIENZA 75 L
DIMENSIONS	80X60 h 155 cm	DIMENSIONI 80X60 h 155 cm
WEIGHT	72 Kg	PESO 72 Kg

WORK EFFICIENCY



USEFUL RATINGS FOR THE COMPARISON WITH OTHER MODELS FROM OUR RANGE

TYPE OF APPLICATION

DUST

DEGREE OF SPECIFICITY



TECHNICAL DATAS

	D 11 PN <small>Atex 2-22</small>	D 11 PN <small>Atex 1-21</small>
PRO		
SUCTION UNIT	VENTURI	UNITÀ DI ASPIRAZIONE VENTURI
SUPPLY PRESSURE	4 - 6 Bar	PRESSIONE DI ALIMENTAZIONE 4 - 6 Bar
AIR CONSUMPTION	1500 l/min	CONSUMO DI ARIA 1500 l/min
FILTER SHAKER	SEMI - AUTO	SCUOTIFILTRO SEMI - AUTO
FILTER CLASS	22000 Cm ²	SUPERFICIE FILTRANTE 22000 Cm ²
STANDARD FILTRATION	M	FILTRAZIONE STANDARD M
FILTRATION OPTIONAL	M + HEPA	FILTRAZIONE OPZIONALE M + HEPA
AIR FLOW	380 m ³ /h	PORTATA D'ARIA 380 m ³ /h
MAX DEPRESSION	280 mBar	DEPRESSIONE MAX 280 mBar
VACUUM VALVE	380 mBar	DEPRESSIONE VALVOLA 380 mBar
CAPACITY	75 L	CAPIENZA 75 L
DIMENSIONS	80X60 h 150 cm	DIMENSIONI 80X60 h 150 cm
WEIGHT	115 Kg	PESO 115 Kg

INDUSTRIAL VACUUMS FOR THE OIL AND METAL CHIPS, THE RIGHT CHOICE

FOR CLEANING MACHINERY IN MECHANICAL WORKSHOPS

ST WD – OIL and SUBOIL models are part of category of vacuum and wet cleaners. ESSENTIAL FOR ANY INDUSTRY THAT WORKS IN THE MECHANIC FIELD. Their main feature is the one you can suck dust, liquids, oils and chips and then make a filtration and separation of liquid parts from the solid ones thanks to the use of a stainless steel grid bucket.



■ POLYVALENT

As opposed to other appliances, the vacuum-cleaner it also has dust filter, making the general cleaning of the industrial environment possible, without having to purchase another vacuum cleaner for this purpose.

■ ELECTRICAL FLOATING AND AUTOMATIC POWER OFF

The need for a reliable method for the suction of fluids has led us to the introduction of an innovative system that allows the automatic turning off of the vacuum cleaner when the maximum liquid level is reached, by replacing the conventional mechanical systems subject to possible problems of malfunctioning in certain specific cases such as liquid intake with submerged tube.

The further advantage is that we didn't have to change the configuration of the machine passing from the dust mode to the liquid due to the installed filter protection that prevents the filter from getting wet.

■ STAINLESS STEEL SEPARATION BASKET

These machines are capable of separating liquids from solids using a macro filtration process that allows the reuse of the oils for the machine tools involved in production. The unit that separates the chips can also be fitted with a nylon filter that increases the filtration of the oils before they are used again.



PRO ST WD

TANGENTIAL INLET FOR BETTER DUST SEPARATION FROM THE FILTER

CONTAINER, FILTER CHAMBER AND TOP COVER MADE IN AISI 304 STAINLESS STEEL IN ACCORDANCE TO ATEX STANDARD

STORAGE CONTAINER

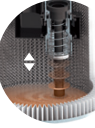
STAINLESS STEEL BASKET FOR LIQUIDS AND METAL CHIPS SEPARATION (OPTIONAL)



SIDE CHANNEL TURBINE

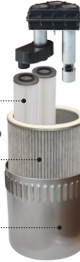


SEMI-AUTOMATIC FILTER CLEANING SYSTEM WITH A PNEU-MECHANICAL PISTON



SECONDARY HEPA FILTER (OPTIONAL)

M CLASS CONDUCTIVE ALUMINIZED PRIMARY CARTRIDGE FILTER



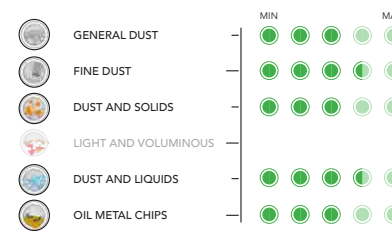
CYCLONE FOR INCREASED FILTER EFFICIENCY

TANK QUICK RELEASE FOR FAST DISPOSAL



The ST WD model is a WET & DRY vacuum cleaner motorized with side channel turbine suitable for a continuous use, 24 hours 24. Multi-purpose, multi-functional vacuum able to vacuum dust and liquids without the need to remove the filter. Designed to answer all industry needs and ideal companion to whom to entrust the general cleaning or the specific one thanks to its ductility. Effective in the dust aspiration thanks to the cartridge unit and the semi-automatic cleaning filter, effective suction of metal shavings from the oil cooler, essential in the industry thanks to the possible installation of the bucket that splits the chips.

WORK EFFICIENCY



USEFUL RATINGS FOR THE COMPARISON WITH OTHER MODELS FROM OUR RANGE

TYPE OF APPLICATION

OIL - METAL CHIPS

DEGREE OF SPECIFICITY



TECHNICAL DATAS

PRO	ST 22 WD	ST 3 WD
MOTORIZATION	TURBINE	TURBINE
POWER	2,2 kW	3 kW
VOLTAGE	230 V	400 V
FREQUENCY	50 Hz	50 Hz
FILTER SHAKER	SEMI - AUTO	SEMI - AUTO
FILTER CLASS	M	M
AIR FLOW	320 m3/h	320 m3/h
MAX DEPRESSION	300 mBar	320 mBar
VACUUM VALVE	200 mBar	250 mBar
CAPACITY	50 L	50 L
DIMENSIONS	80x60 h 130 cm	80x60 h 130 cm
WEIGHT	85 Kg	85 Kg

PRO 1100 OIL / SUBOIL

EXTREMELY STURDY TELESCOPIC CONTAINER LIFTING SYSTEM

TANGENTIAL INLET FOR BETTER DUST SEPARATION FROM THE FILTER

STORAGE CONTAINER

DISCHARGE PUMP FOR AUTONOMOUS AND CONTINUOUS LIQUIDS EJECTION (MODELS SUBOIL)

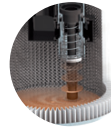
REVERSE FLOW SYSTEM FOR LIQUIDS EJECTION (MODELS OIL)



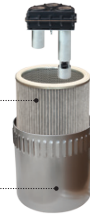
SINGLE-STAGE OR TWO-STAGE SIDE CHANNEL TURBINE



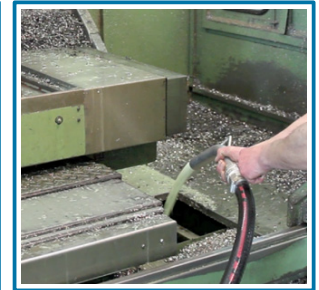
SEMI-AUTOMATIC FILTER CLEANING SYSTEM WITH A PNEU-MECHANICAL PISTON



M CLASS CONDUCTIVE ALUMINIZED PRIMARY CARTRIDGE FILTER

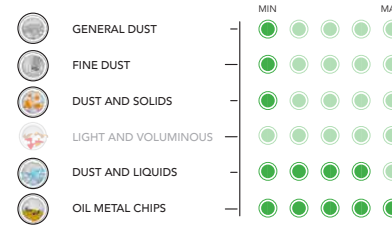


CYCLONE FOR INCREASED FILTER EFFICIENCY



PRO 1100 OIL

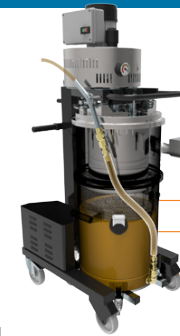
WORK EFFICIENCY



USEFUL RATING FOR THE COMPARISON WITH OTHER MODELS FROM OUR RANGE

TYPE OF APPLICATION **OIL - METAL CHIPS**

DEGREE OF SPECIFICITY ●●●●●



- WIRELESS ELECTRIC FLOATER FOR AUTOMATIC OVERFLOW SHUT OFF
- STAINLESS STEEL METAL CHIPS SEPARATION BASKET
- REVERSE FLOW SYSTEM IN CASE OF PUMP BLOCKAGE DUE TO PRESENCE OF MUDS

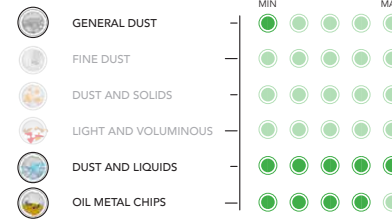
The 1100 OIL is the original, a forerunner and pioneer who laid down the law in its field of membership, namely the mechanical factories. Extremely professional and practical tool, characterized by unique functionalities of OILS and CHIPS suction as it is capable of separating the liquid part from the solid thanks to a grid basket made of stainless steel, carrying a macro filtration of materials. The models proposed for this type of application are equipped with an automatic stop system of the liquid, allowing the switching off at the maximum attainable level of liquid. The emptying of the vacuumed liquids is simple, efficient and fast thanks to the Coynco's reverse flow system, which, exploits the air produced by the turbine for the expulsion of the aspirated liquid, overcoming the use of pumps or even of elementary and primitive systems to fall by gravity. This model has as its uniqueness to be versatile because it also features a dust filter to use it for general cleaning in industrial environments without having to buy a dedicated vacuum.

TECHNICAL DATAS

PRO	1122 OIL	1130 OIL	1155 OIL	1122 SUBOIL	1130 SUBOIL
MOTORIZATION	TURBINE	TURBINE	TURBINE	TURBINE	TURBINE
POWER	2,2 kW	3 kW	5,5 kW	2,2 kW	3 kW
VOLTAGE	230 V	400 V	400 V	230 V	400 V 3P+N+T
FREQUENCY	50 Hz	50 Hz	50 Hz	50 Hz	50 Hz
LIQUID EJECTION	REVERSE FLOW	REVERSE FLOW	REVERSE FLOW	PUMP	PUMP
DRAIN INLET				CONTINUOUS AUTO	CONTINUOUS AUTO
FILTER SHAKER	SEMI - AUTO	SEMI - AUTO	SEMI - AUTO	SEMI - AUTO	SEMI - AUTO
FILTER CLASS	M	M	M	M	M
AIR FLOW	320 m3/h	320 m3/h	520 m3/h	320 m3/h	320 m3/h
MAX DEPRESSION	300 mBar	320 mBar	320 mBar	300 mBar	320 mBar
VACUUM VALVE	200 mBar	250 mBar	250 mBar	200 mBar	250 mBar
CAPACITY	100 L	100 L	100 L	100 L	100 L
DIMENSIONS	80X63 h 165 cm	80X63 h 165 cm	80X63 h 180 cm	80X63 h 165 cm	80X63 h 165 cm
WEIGHT	130 Kg	130 Kg	155 Kg	140 Kg	140 Kg

PRO 1100 SUBOIL

WORK EFFICIENCY



USEFUL RATING FOR THE COMPARISON WITH OTHER MODELS FROM OUR RANGE

TYPE OF APPLICATION **OIL - METAL CHIPS**

DEGREE OF SPECIFICITY ●●●●●



- DOUBLE ELECTRIC FLOATER, FOR SIMULTANEOUS VACUUMING AND DISCHARGE
- STAINLESS STEEL METAL CHIPS SEPARATION BASKET
- DISCHARGE PUMP FOR AUTONOMOUS AND CONTINUOUS LIQUIDS EJECTION
- REVERSE FLOW SYSTEM IN CASE OF PUMP BLOCKAGE DUE TO PRESENCE OF MUDS

The model 1100 SUBOIL is the ideal candidate and an alternative, to the suction of large quantities of liquid with a compact vacuum cleaner, especially in the emptying of tanks in the mechanic factories. The SUBOIL models are able to work independently and continuously vacuuming without limits, thanks to the equipment of a stainless steel pump for evacuation of liquid and of a double float. The first has the security function of autonomously turn off the machine to the attainment of the maximum level of the liquid, the second allows the automatic restart when the container is emptied. Any problem of the blocking of the pump due to muddy materials is exceeded by the reversal of flow that, through the air, free obstructions in the passage of the liquid.

PRO CAR 1155 OIL / SUBOIL

EXTREMELY STURDY TELESCOPIC CONTAINER LIFTING SYSTEM

REINFORCED FRAME

MATERIAL ENTRANCE FREE OF MECHANISMS SUBJECT TO BLOCKING

DISCHARGE PUMP FOR AUTONOMOUS AND CONTINUOUS LIQUIDS EJECTION (MODELS SUBOIL)

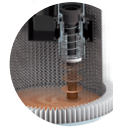
REVERSE FLOW SYSTEM FOR LIQUIDS EJECTION (MODELS OIL)



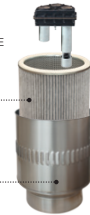
TWO-STAGE SIDE CHANNEL TURBINE



SEMI-AUTOMATIC FILTER CLEANING SYSTEM WITH A PNEU-MECHANICAL PISTON



M CLASS CONDUCTIVE ALUMINIZED PRIMARY CARTRIDGE FILTER ALWAYS MOUNTED



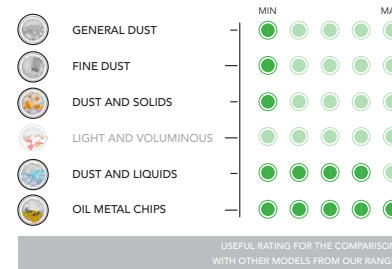
CYCLONE FOR INCREASED FILTER EFFICIENCY

TECHNICAL DATAS

PRO	CAR 1155 OIL	CAR 1155 SUBOIL
MOTORIZATION	TURBINE	TURBINE
POWER	5,5 kW	5,5 kW
VOLTAGE	400 V ⚡	400 V ⚡
FREQUENCY	50 Hz	50 Hz
LIQUID EJECTION	REVERSE FLOW	PUMP
DRAIN INLET		CONTINUOUS AUTO
FILTER SHAKER	SEM - AUTO	SEM - AUTO
FILTER CLASS	M	M
AIR FLOW	320 m3/h	320 m3/h
MAX DEPRESSION	530 mBar	530 mBar
VACUUM VALVE	450 mBar	450 mBar
CAPACITY	100 L	100 L
DIMENSIONS	118X63 h 169 cm	80X63 h 169 cm
WEIGHT	155 Kg	165 Kg

PRO CAR 1155 OIL

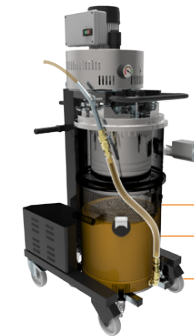
WORK EFFICIENCY



TYPE OF APPLICATION

OIL - METAL CHIPS

DEGREE OF SPECIFICITY



WIRELESS ELECTRIC FLOATER FOR AUTOMATIC OVERFLOW SHUT OFF

STAINLESS STEEL METAL CHIPS SEPARATION BASKET

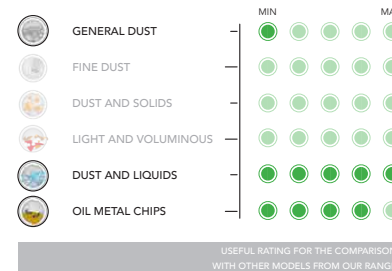
REVERSE FLOW SYSTEM IN CASE OF PUMP BLOCKAGE DUE TO PRESENCE OF MUDES

The model CAR 1155 OIL is powered with three-phase side channel turbine from 5.5 kW in series, high prevalence ideal for the suction of heavy materials, high specific weight. Extremely professional and practical tool, characterized by unique functionalities in the aspiration of OILS and CHIPS as it is capable of separating the liquid part from the solid thanks to a grid basket made of stainless steel, carrying a macro filtration of materials. The models proposed for this type of application are equipped with an automatic stop system of the liquid, allowing the switching off of the maximum attainable level of liquid. This model has as its uniqueness to be versatile because it also features a dust filter to use it for general cleaning in industrial environments without having to buy a dedicated vacuum.

The emptying of the aspirated liquids is simple, efficient and fast thanks to the Coyco's reverse flow system, which exploits the air produced by the turbine for the expulsion of the aspirated liquid, overcoming the use of pumps or even of elementary and primitive systems to fall by gravity.

PRO CAR 1155 SUBOIL

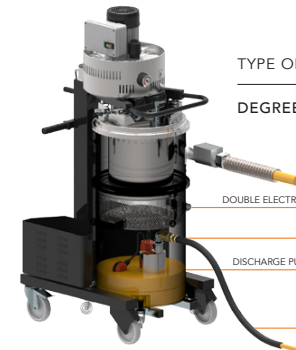
WORK EFFICIENCY



TYPE OF APPLICATION

OIL - METAL CHIPS

DEGREE OF SPECIFICITY



DOUBLE ELECTRIC FLOATER, FOR SIMULTANEOUS VACUUMING AND DISCHARGE

STAINLESS STEEL METAL CHIPS SEPARATION BASKET

DISCHARGE PUMP FOR AUTONOMOUS AND CONTINUOUS LIQUIDS EJECTION

REVERSE FLOW SYSTEM IN CASE OF PUMP BLOCKAGE DUE TO PRESENCE OF MUDES

The model CAR 1155 SUBOIL is powered with three-phase side channel turbine from 5.5 kW in series, high prevalence ideal for the suction of heavy materials, high specific gravity, ideal candidate, and alternatively, for sucking huge amounts of liquid with a compact vacuum cleaner, especially in the emptying of tanks in mechanic factories.

The SUBOIL models are able to work independently and continuously vacuuming without limits, thanks to the equipment of a stainless steel pump for evacuation of liquid and of a double float. The first has the security function of autonomously turn off the machine to the attainment of the maximum level of the liquid, the second allows the automatic restart when the container is emptied. Any problem of the blocking of the pump due to muddy materials is exceeded by the reversal of flow that, through the air, free obstructions in the passage of the liquid.

PRO 11 PN OIL

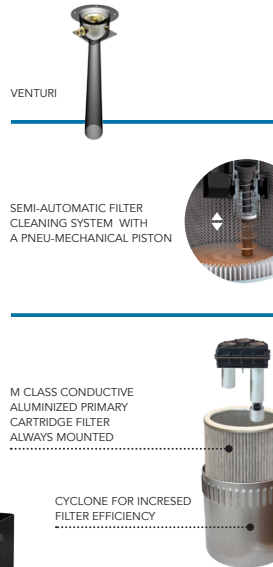
EXTREMELY STURDY TELESCOPIC CONTAINER LIFTING SYSTEM

REINFORCED FRAME

MATERIAL ENTRANCE FREE OF MECHANISMS SUBJECT TO BLOCKING

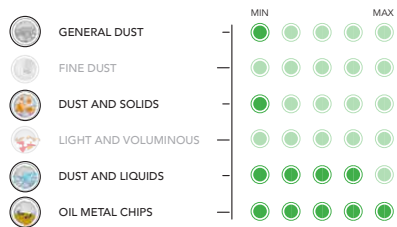
STORAGE CONTAINER

REVERSE FLOW SYSTEM FOR LIQUIDS EJECTION



The model 11 PN OIL is a compressed air vacuum designed to meet the needs of suction of liquids and solids in a position to separate the liquid part from the solid thanks to a stainless steel grid basket, by performing a macro-filtration of materials. This model is provided with a liquid expulsion system by means of flow reversal which allows in an extremely simple and fast to empty the liquid collection drum aspirated.

WORK EFFICIENCY



USEFUL RATING FOR THE COMPARISON WITH OTHER MODELS FROM OUR RANGE

TYPE OF APPLICATION **OIL AND METAL CHIPS**

DEGREE OF SPECIFICITY ●●●●●

TECHNICAL DATAS

PRO	11 PN OIL
SUCTION UNIT	VENTURI
SUPPLY PRESSURE	4 - 6 Bar
AIR CONSUMPTION	1500 l/min
LIQUID EJECTION	REVERSE FLOW
FILTER SHAKER	SEMI - AUTO
FILTER CLASS	M
AIR FLOW	380 m ³ /h
MAX DEPRESSION	280 mBar
VACUUM VALVE	380 mBar
CAPACITY	100 L
DIMENSIONS	80x60 h 150 cm
WEIGHT	115 Kg

INDUSTRIAL VACUUMS DESIGNED FOR THE COLLECTION OF LIGHT AND VOLUMINOUS MATERIALS

The Reverse was designed specifically for the removal of light but voluminous material such as paper, textiles or plastic of any type. Being very volatile, this kind of material makes suction problematic for conventional vacuum cleaners as the filters rapidly become clogged.

OPERATION

The suction flows from top to bottom forcing the waste material downwards into the filtering bag. With the bag stretched open, the force of the suction compresses the waste material inside allowing the bag to be filled completely before its disposal

OPTIONS FOR FILTER BAG DISPOSAL

The standard filter is made of a light textile that can be used as a disposal bag. It's possible to install the principal filter container in polyester for the cleaning of very dusty materials.

FOR USE IN THE FOLLOWING SECTORS:

PAPER

Suitable for the suction of scraps of paper or card as well as the dust produced during the trimming phase.

TEXTILES

For the suction of any type of textile scraps (e.g. cotton, glass wool, etc.) during production. For the suction of absorbent material often of a light but very voluminous nature.

PACKAGING

For the suction of packing material or waste from packaging machinery in any sector.

WOOD

For the suction of dust or wood chips in the environments or coming from any machine.

LARGE CAPACITY

THE SUCTION COMPRESSES THE SCRAPS INSIDE THE BAG

A SAFETY FILTER IS INSTALLED IN ORDER TO GUARANTEE A CLEAN AIR EMISSION IN THE ENVIRONMENT



SUCTION FLOW USEFUL FOR MATERIAL COMPACTION

CAPACITY OF CONTAINER BAG FULLY USED

LARGE CAPACITY CONTAINER BAG

SAFETY DUST FILTER

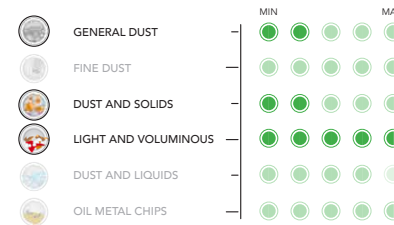
SINGLE-STAGE OR TWO-STAGE SIDE CHANNEL TURBINE



CONTAINER, FILTER CHAMBER AND TOP COVER
MADE IN AISI 304 STAINLESS STEEL IN ACCORDANCE
TO ATEX STANDARD



WORK EFFICIENCY



USEFUL RATING FOR THE COMPARISON
WITH OTHER MODELS FROM OUR RANGE

TYPE OF APPLICATION

LIGHT AND VOLUMINOUS

DEGREE OF SPECIFICITY

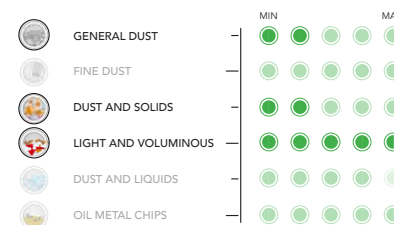


TECHNICAL DATAS

PRO	RVS 22	RVS 3	RVS 55 P
MOTORIZATION	TURBINE	TURBINE	TURBINE
POWER	2,2 kW	3 kW	5,5 kW
VOLTAGE	230 V	400 V	400 V
FREQUENCY	50 Hz	50-60 Hz	50 Hz
FILTER CLASS	M	M	M
AIR FLOW	320 m3/h	320 m3/h	520 m3/h
MAX DEPRESSION	300 mBar	320 mBar	320 mBar
VACUUM VALVE	220 mBar	250 mBar	250 mBar
CAPACITY	120 L	120 L	120 L
DIMENSIONS	100X60 h 135 cm	100X60 h 135 cm	100X60 h 135 cm
WEIGHT	114 Kg	114 Kg	134 Kg

The RVS models and their collection system are the most effective solution in the suction and collection of light and bulky materials. The collection system adopted on these models is the most effective for the suction of a low specific weight materials such as wood, scraps of plastic, paper or textile. The construction design allows complete filling of the collection bag and prevents the aspirated material from clogging the filters as would occur with conventional industrial vacuums. The choice of the motorization with side channel turbine suitable for a continuous service h24 favors the coupling in the production machines in the sectors of packaging, textile, paper and wood.

WORK EFFICIENCY



USEFUL RATING FOR THE COMPARISON
WITH OTHER MODELS FROM OUR RANGE

TYPE OF APPLICATION

LIGHT AND VOLUMINOUS

DEGREE OF SPECIFICITY



TECHNICAL DATAS

PRO	RVS 22 AtEx 2-22	RVS 3 AtEx 2-22	RVS 55 P AtEx 2-22
MOTORIZATION	TURBINE	TURBINE	TURBINE
POWER	2 kW	2,6 kW	5,2 kW
VOLTAGE	230 V	400 V	400 V
FREQUENCY	50 Hz	50-60 Hz	50 Hz
FILTER CLASS	M	M	M
AIR FLOW	320 m3/h	320 m3/h	520 m3/h
MAX DEPRESSION	300 mBar	320 mBar	320 mBar
VACUUM VALVE	200 mBar	220 mBar	240 mBar
CAPACITY	120 L	120 L	120 L
DIMENSIONS	100X60 h 135 cm	100X60 h 135 cm	100X60 h 135 cm
WEIGHT	114 Kg	114 Kg	134 Kg

PRO RVS 180

SUCTION FLOW USEFUL FOR MATERIAL COMPACTION

CAPACITY OF CONTAINER BAG FULLY USED

LARGE CAPACITY CONTAINER BAG

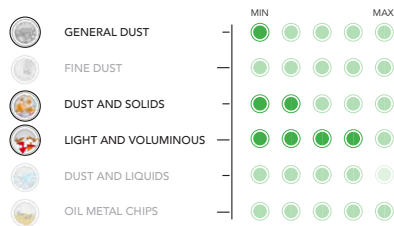
SAFETY DUST FILTER

THROUGH-FLOW MOTOR



The RVS 180 is a handy professional vacuum cleaner for sucking light and bulky materials. The collection system adopted on these models is the most effective for the suction of a low specific weight materials such as wood, scraps of plastic, paper or textile. The construction design allows complete filling of the collection bag and prevents the aspirated material from clogging the filters as would occur with conventional industrial vacuums. With excellent maneuverability its dimensions allow easy movement even in the most confined spaces facilitating small routine cleaning jobs.

WORK EFFICIENCY



USEFUL RATING FOR THE COMPARISON WITH OTHER MODELS FROM OUR RANGE

TYPE OF APPLICATION

LIGHT AND VOLUMINOUS

DEGREE OF SPECIFICITY



TECHNICAL DATAS

PRO	RVS 180
MOTORIZATION	NR 1 By-pass
POWER	1100 W
VOLTAGE	230 V
FREQUENCY	50-60 Hz
FILTER CLASS	M
AIR FLOW	170 m ³ /h
MAX DEPRESSION	230 mBar
CAPACITY	80 L
DIMENSIONS	50x50 h 92 cm
WEIGHT	28 Kg

PRO BF

MANUAL FILTER CLEANING DEVICE

CARTRIDGE ALUMINIZED CONDUCTIVE FILTER

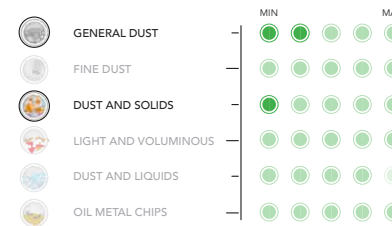
COMPACT DESIGN

SIDE CHANNEL TURBINE



The FIXED BASES are horizontal vacuum cleaners with reduced dimensions useful in the board machine installations for the extraction of limited quantities of dust during the phases of the machining process.

WORK EFFICIENCY



USEFUL RATING FOR THE COMPARISON WITH OTHER MODELS FROM OUR RANGE

TYPE OF APPLICATION

DUST

DEGREE OF SPECIFICITY



TECHNICAL DATAS

PRO	BF 22	BF 3
MOTORIZATION	TURBINE	TURBINE
POWER	2,2 kW	3 kW
VOLTAGE	230 V	400 V
FREQUENCY	50 Hz	50-60 Hz
FILTER CLASS	M	M
AIR FLOW	320 m ³ /h	320 m ³ /h
MAX DEPRESSION	300 mBar	320 mBar
VACUUM VALVE	220 mBar	250 mBar
CAPACITY	12 L	12 L
DIMENSIONS	83X51 h 50 cm	83X51 h 50 cm
WEIGHT	49 Kg	49 Kg



INDUSTRIAL VACUUMS

SOLARYS srl COYNCO division
Via Marie Curie, 1
26030 Pessina Cremonese (CR) • ITALY
Tel. +39 0372 87999 • Fax +39 0372 818680

info@coynco.it • www.coynco.com